

## Solis-Link: RF

### Solis Data Loggers

Solis box type (gateway) + stick type (terminal) monitoring data collector, the terminal uses RS485 communication to connect to the inverter, the gateway uses wired Ethernet to connect to the home router, and the gateway and terminal are connected through RF data to realize automatic networking. The equipment is connected to the gateway automatically, free of wiring and wireless network configuration; it aims to realize a stable and intelligent operation and maintenance management plan for users.

#### Features:

- Plug and play, easy to operate
- No Wi-Fi configuration required, RF intelligent connection
- Stable network connection, real-time data transmission
- Remote monitoring, allowing real-time monitoring of mobile APP and Web

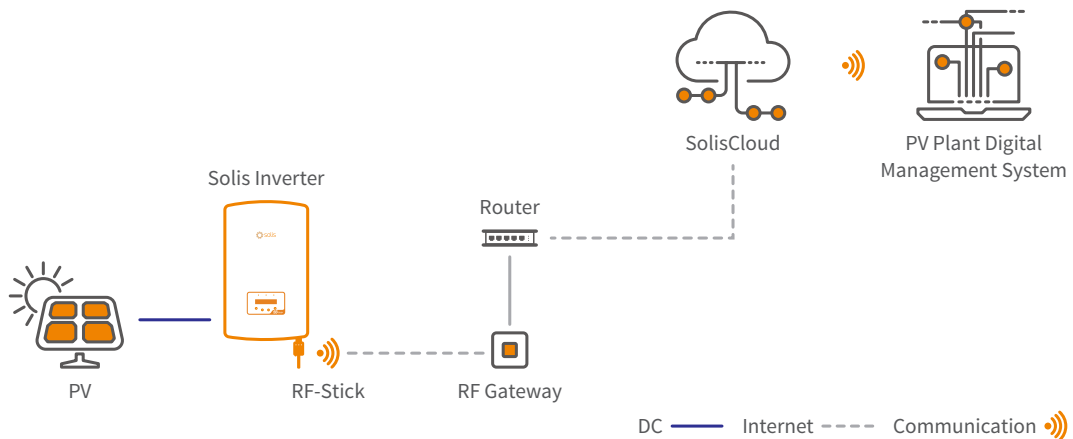


RF-Stick



RF Gateway

### Intelligent Monitoring Solution - Link: RF



## DATASHEET

## Solis-Link: RF

Models	RF-Stick	RF-Gateway
<b>Wireless parameters</b>		
Demodulation		FSK
Data rate		9.6 kbps
Transmitting power		+20 dBm
Transmitting frequency offset		20 kHz
Transmission channel bandwidth		< 8 kHz
Receiving channel bandwidth		200 kHz
<b>Hardware parameters</b>		
Data interface	RS 485	Adaptive 10 / 100 Mbps
Operating voltage	DC 5 V ~ DC 12 V	DC 5.0 V (+ / -5%)
Max. working voltage	15 V	12 V
Operating power consumption		1.5 W
Indicator light	System running Status--RUN Light Inverter Connection Status--COM Light RF Connection Status--RF Light	System running Status--RUN Server Connection Status--SER RF Connection Status--RF
Operating humidity	10% - 90%, relative humidity, non-condensing	
Storage temperature	-45 ~ +90°C	
Storage humidity	< 40%	
<b>Software parameters</b>		
Number of connected inverters	1	/
Serial communication rate	9600 bps (adjustable: 1200 - 57600 bps)	/
Data collection intervals	5 minutes	/
Link requirement	/	CAT5 shielded network cable length < 50 m
<b>Mechanical</b>		
Dimensions (L × W × H)	47 × 41 × 160 mm	90 × 23 × 90 mm
Weight	130 g	80 g
Protection degree	IP 65	IP 21
<b>Others</b>		
Certification	CE	